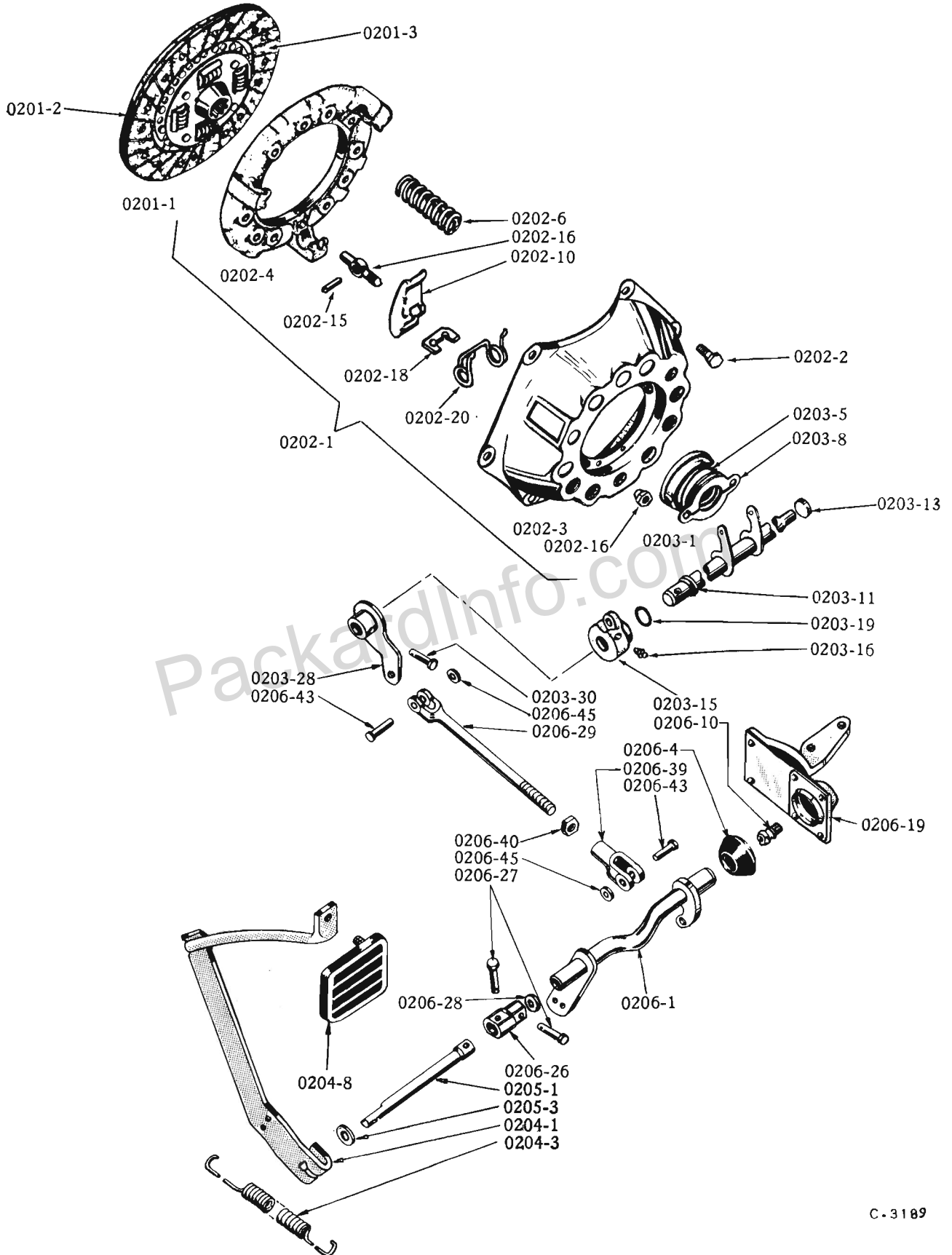


CLUTCH, PEDAL AND TORQUE CONVERTER

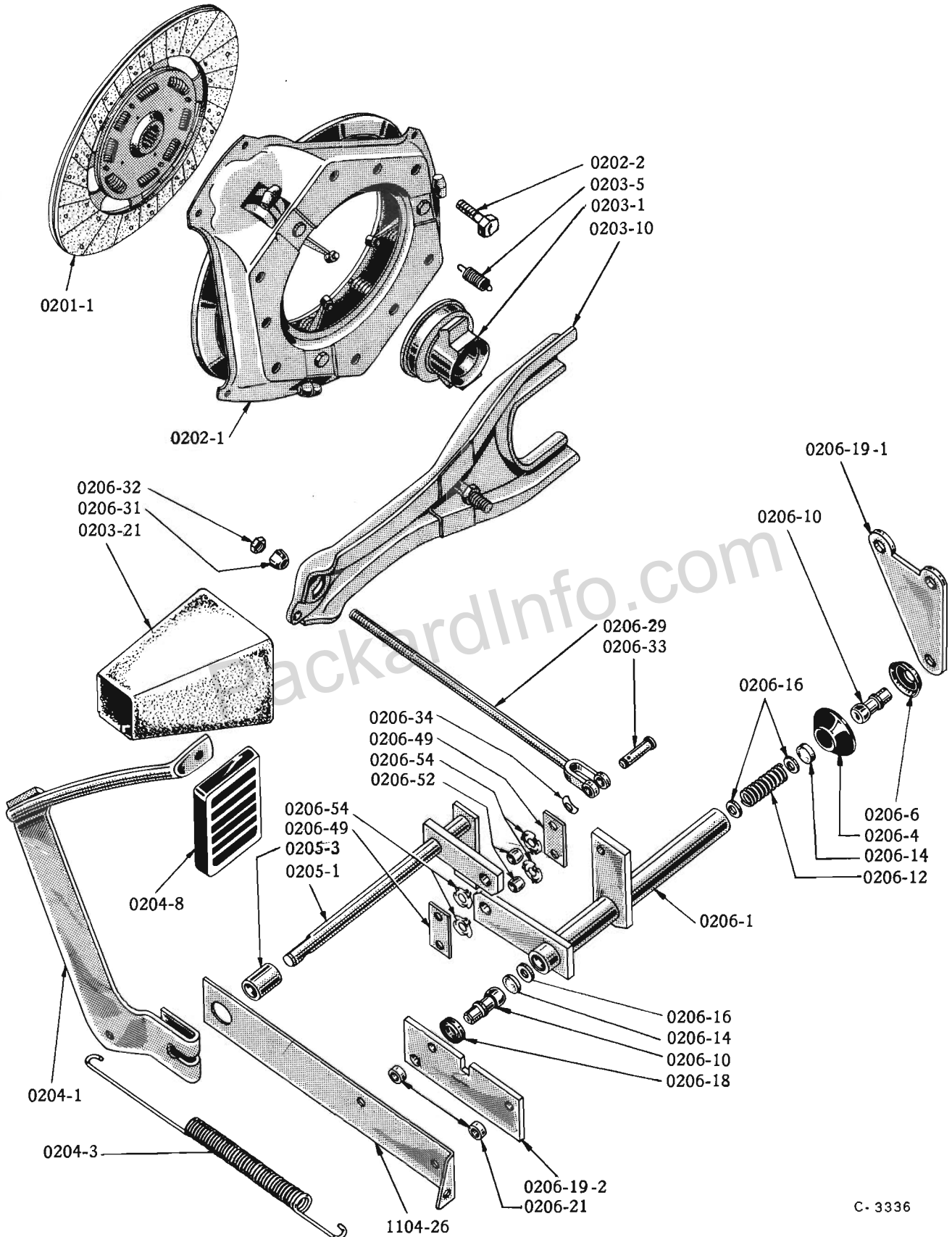
Plate 02-1



C-3189

CLUTCH, PEDAL AND RELEASE MECHANISM - Except 56J
(Used with Standard and Overdrive Transmission)

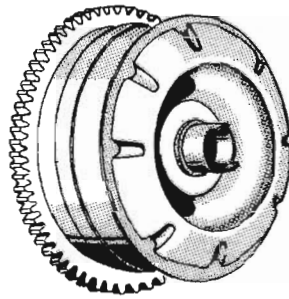
CLUTCH, PEDAL AND TORQUE CONVERTER



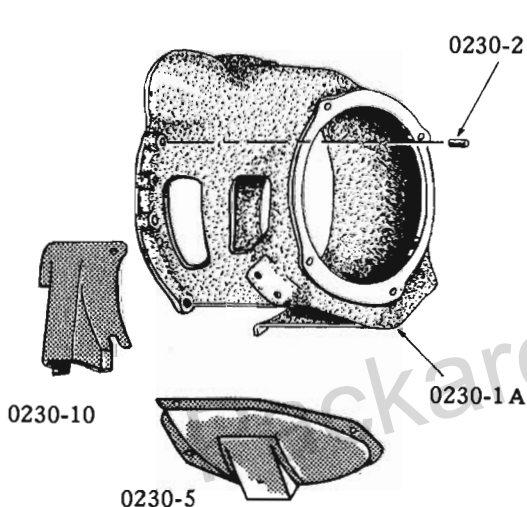
CLUTCH, PEDAL AND RELEASE MECHANISM - Model 56J (Used with Overdrive Transmission)

CLUTCH, PEDAL AND TORQUE CONVERTER

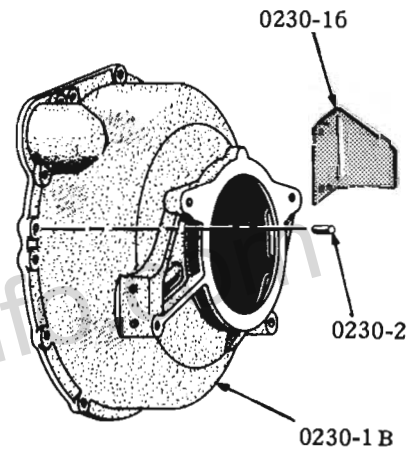
Plate 02-3



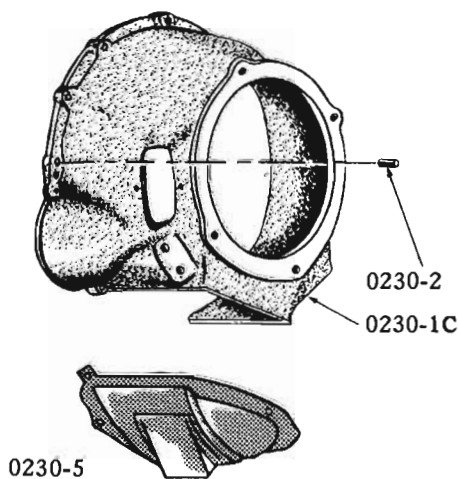
0220-1



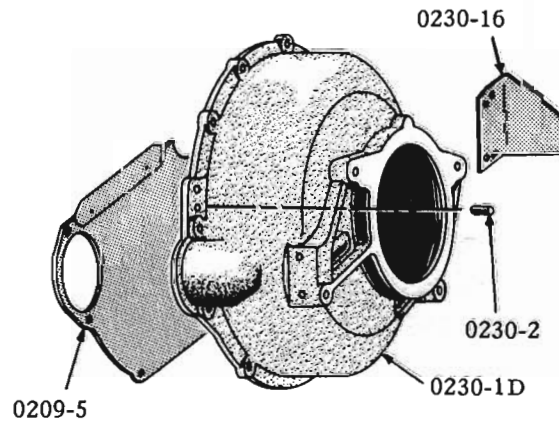
MODELS 16G6, 56G



MODELS 56G, 57G



MODELS 16G8, 6H

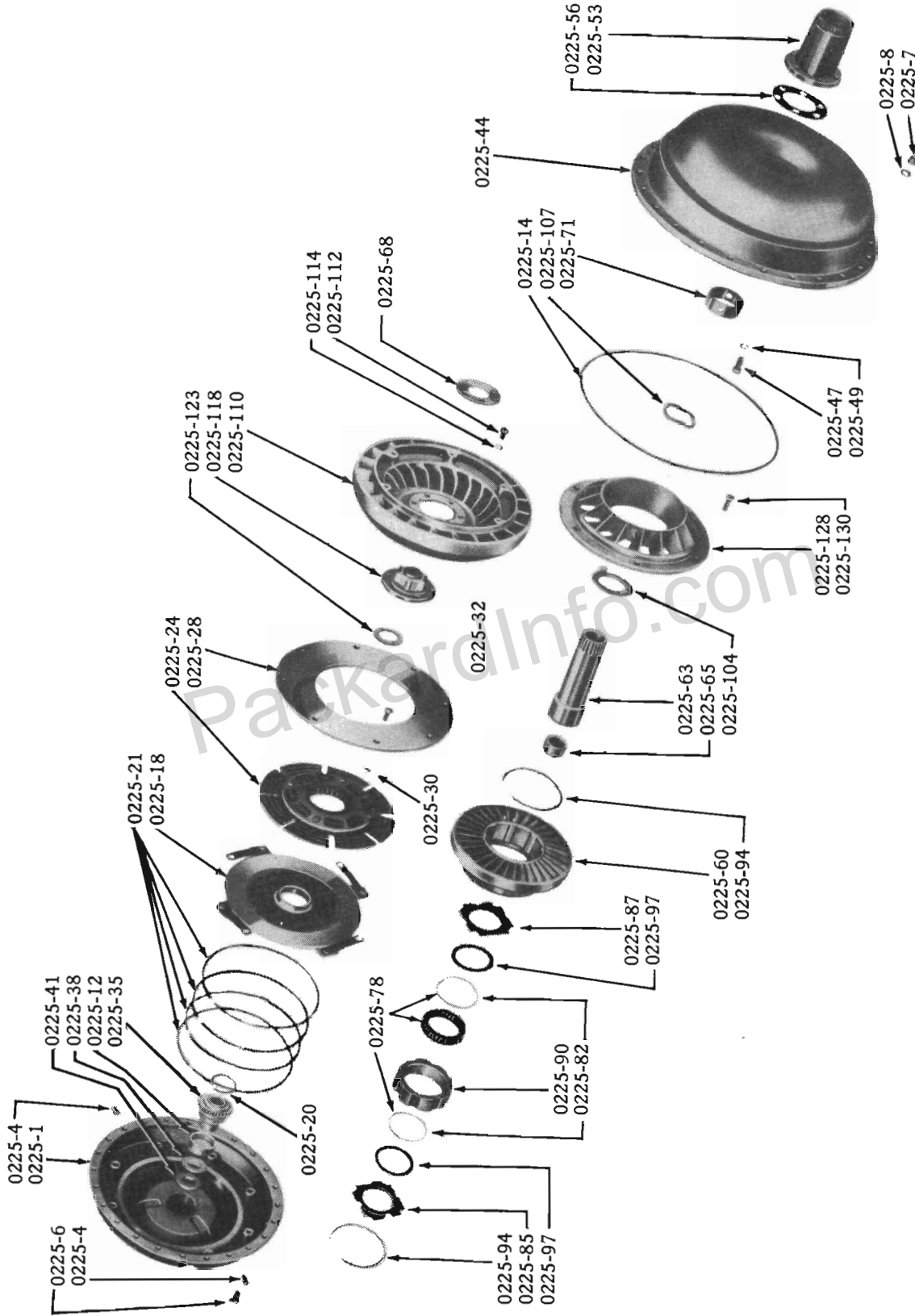


MODELS 56B, 56H, 57B, 57H, 57L

C-3348

TORQUE CONVERTER AND HOUSINGS - Except 56J

CLUTCH, PEDAL AND TORQUE CONVERTER



C-3339

TORQUE CONVERTER - Model 56J

CLUTCH, PEDAL AND TORQUE CONVERTER

0202

ILLUST. NUMBER	PART NUMBER	CHANGE	DESCRIPTION	MODELS	PER CAR
0201- CLUTCH DRIVEN PLATE WITH FACINGS (Plates 02-1,2)					
			USED WITH ENGINE		
0201-1	535076		PLATE W/FACINGS, DRIVEN (9 1/8" O.D.) 185"	16G6, 56G, 57G	1
0201-1	531689		PLATE W/FACINGS, DRIVEN (9 1/4" O.D.) 224"	16G8	1
0201-1	536334		PLATE W/FACINGS, DRIVEN (STD. - 10" O.D.) 259"	16G8, 6H, 56B, 57B	1
0201-1	1539021		PLATE W/FACINGS, DRIVEN (HD.-10 1/4" O.D.) 259"	56B, 57B	1
0201-1	683842		PLATE W/FACINGS, DRIVEN (HD.-10 1/2" O.D.) 289"	56B, 56H	1
0201-1	1539021		PLATE W/FACINGS, DRIVEN (STD.-10 1/4" O.D.) 289"	56B, 56H	1
0201-1	1539021		PLATE W/FACINGS, DRIVEN (STD.-10 1/4" O.D.) } EXCEPT	57H	1
0201-1	683842		PLATE W/FACINGS, DRIVEN (HD.-10 1/2" O.D.) } K7	57H	1
0201-1	1542368		PLATE W/FACINGS, DRIVEN (10 1/2" O.D.) K7	57H	1
0201-1	1542368		PLATE W/FACINGS, DRIVEN (10 1/2" O.D.)	57L	1
0201-1	473176		PLATE W/FACINGS, DRIVEN	56J	1
0201-2.3	535515		FACING, DRIVEN PLATE (9 1/8" O.D.) 185"	16G6, 56G, 57G	2
0201-2.3	513441		FACING, DRIVEN PLATE (9 1/4" O.D.) 224"	16G8	2
0201-2.3	536335		FACING, DRIVEN PLATE (STD. -10" O.D.) 259"	16G8, 6H, 56B, 57B	2
0201-2.3	1539022		FACING, DRIVEN PLATE (HD.-10 1/4" O.D.) 259"	56B, 57B	2
0201-2.3	683843		FACING, DRIVEN PLATE (HD.-10 1/2" O.D.) 289"	56B, 56H, 57B	2
0201-2.3	1539022		FACING, DRIVEN PLATE (STD.-10 1/4" O.D.) } EXCEPT	57H	2
0201-2.3	683843		FACING, DRIVEN PLATE (HD.-10 1/2" O.D.) } K7	57H	2
0201-2.3	1542385		FACING, DRIVEN PLATE -K7	57H	2
0201-2.3	1542385		FACING, DRIVEN PLATE	57L	2
0201-2.3	1539022		FACING, DRIVEN PLATE (STD.-10 1/4" O.D.) 289"	56B, 56H	2
0201-2.3	▲		FACING, DRIVEN PLATE	56J	2
	662296		RIVET, TO PLATE 9/64"X7/32" 185", 224"	16G, 56G, 57G	32
	662296		RIVET, TO PLATE 9/64"X7/32" 259"	16G8, 6H, 56B, 57B	36
	662296		RIVET, TO PLATE 9/64"X7/32" 289"	56B, 56H, 57H, 57L	40
0202- CLUTCH COVER AND PRESSURE PLATE (Plates 02-1,2)					
			USED WITH ENGINE		
			PLATE O.D.		
0202-1	535077		COVER W/PRESSURE PLATE -U.S.A., 7 29/32" 185"	16G6, 56G, 57G	1
0202-1	537335		COVER W/PRESSURE PLATE -CANADA, 7 29/32" 185"	16G6, 56G, 57G	1
0202-1	531576		COVER W/PRESSURE PLATE (HD.) 7 59/64" 185"	56G, 57G	1
0202-1	531576		COVER W/PRESSURE PLATE 7 59/64" 224"	16G8	1
0202-1	536331		COVER W/PRESSURE PLATE (STD.) 10 1/16" 259"	16G8, 6H, 56B	1
0202-1	1541757		COVER W/PRESSURE PLATE (STD.) 10 1/16" 259"	57B	1
0202-1	1539020		COVER W/PRESSURE PLATE (HD.) 10 9/32" 259"	56B, 57B	1
0202-1	683636		COVER W/PRESSURE PLATE (HD.) 10-5/8" 289"	56B, 56H	1
0202-1	1539020		COVER W/PRESSURE PLATE (STD.) 10 9/32" 289"	56B, 56H	1
0202-1	1539020		COVER W/PRESSURE PLATE (STD.) } EXCEPT 10 9/32"	57H	1
0202-1	683636		COVER W/PRESSURE PLATE (HD.) } K7 10 5/8"	57H	1
0202-1	1542367		COVER W/PRESSURE PLATE -K7. 10 17/32"	57H	1
0202-1	1542367		COVER W/PRESSURE PLATE. 10 17/32"	57L	1
0202-1	403502		COVER W/PRESSURE PLATE.	56J	1
0202-2	181280		SCREW, TO FLYWHEEL 5/16" -18X7/8" 185", 224"	16G, 56G, 57G	6
0202-2	195227		SCREW, TO FLYWHEEL 3/8" -16X7/8" 259", 289"	16G8, 6H, 56B, 56H, 57B, 57H, 57L	6
0202-2	6302440		SCREW, TO FLYWHEEL 5/16" -18X1"	56J	6
	G120214		WASHER, LOCK 5/16" 185", 224"	16G, 56G, 57G	6
	G120382		WASHER, LOCK 3/8" 259", 289"	16G8, 6H, 56B, 56H, 57B, 57H, 57L	6
	G120214		WASHER, LOCK 5/16"	56J	6
0202-3	▲		COVER, CLUTCH - NOT FURNISHED SEPARATELY - ORDER COVER W/PRESSURE PLATE	ALL MODELS	1
0202-4	535198		PLATE, PRESSURE (7 29/32" O.D.) 185"	16G6, 56G, 57G	1
0202-4	198867		PLATE, PRESSURE (HD.-7 59/64" O.D.) 185"	56G, 57G	1
0202-4	198867		PLATE, PRESSURE (7 59/64" O.D.) 224"	16G8	1
0202-4	661657		PLATE, PRESSURE (STD.-10 1/16" O.D.) 259"	16G8, 6H, 56B, 57B	1
0202-4	1539023		PLATE, PRESSURE (HD.-10 9/32" O.D.) 259"	56B, 57B	1

NOTE { ▲ - NOT AVAILABLE.

CLUTCH, PEDAL AND TORQUE CONVERTER

ILLUST. NUMBER	PART NUMBER	CHANGE	DESCRIPTION	MODELS	PER CAR
0202- CLUTCH COVER AND PRESSURE PLATE					
Cont'd. (Plates-02-1,2)					
			USED WITH		
			PLATE O.D. ENGINE		
0202-4	683793		PLATE, PRESSURE (HD. - 10 5/8" O.D.) 289"	56B, 56H.	1
0202-4	1539023		PLATE, PRESSURE (STD. - 10 9/32" O.D.) 289"	56B, 56H.	1
0202-4	1539023		PLATE, PRESSURE (STD. - 10 9/32" O.D.)	57H.	1
0202-4	683793		PLATE, PRESSURE (HD. - 10 5/8" O.D.)	57H.	1
0202-4	1542384		PLATE, PRESSURE (10 17/32" O.D.) K7.	57H.	1
0202-4	1542384		PLATE, PRESSURE (10 17/32" O.D.)	57L.	1
0202-4	▲		PLATE, PRESSURE (NOT FURNISHED SEPARATELY)	56J.	1
0202-6	197467		SPRING, PRESSURE PLATE (7 1/2 COILS - PAINTED ORANGE) 185"	16G6, 56G, 57G	3
0202-6	535588		SPRING, PRESSURE PLATE (7 COILS - PAINTED BLACK) 185"	16G6, 56G, 57G	3
0202-6	531577		SPRING, PRESSURE PLATE (7 3/4 COILS - PAINTED LAVENDER) (HEAVY DUTY) 185"	56G, 57G.	9
0202-6	531577		SPRING, PRESSURE PLATE (7 3/4 COILS - PAINTED LAVENDER) 224"	16G8	9
0202-6	536330		SPRING, PRESSURE PLATE (7 COILS - PAINTED GREEN) 259"	16G8, 6H, 56B.	9
0202-6	536330		SPRING, PRESSURE PLATE (7 COILS - PAINTED GREEN)	57B.	3
0202-6	182589		SPRING, PRESSURE PLATE (7 1/4 COILS - PAINTED GRAY)	57B.	6
0202-6	1539024		SPRING, PRESSURE PLATE (7 1/2 COILS - PAINTED BROWN)	56B, 57B.	6
0202-6	186852		SPRING, PRESSURE PLATE (9 COILS - PAINTED PURPLE) 259"	56B, 57B.	3
0202-6	182589		SPRING, PRESSURE PLATE (PAINTED GRAY) (HEAVY DUTY) 289"	56B, 56H.	9
0202-6	1539024		SPRING, PRESSURE PLATE (7 1/2 COILS - PAINTED BROWN) 289"	56B, 56H.	6
0202-6	186852		SPRING, PRESSURE PLATE (9 COILS - PAINTED PURPLE) 289"	56B, 56H.	3
0202-6	1539024		SPRING, PRESSURE PLATE (7 1/2 COILS - PAINTED BROWN)	57H.	6
0202-6	186852		SPRING, PRESSURE PLATE (9 COILS - PAINTED PURPLE)	57H.	3
0202-6	1542714		SPRING, PRESSURE PLATE (9 COILS - PAINTED WHITE)	57H.	6
0202-6	197467		SPRING, PRESSURE PLATE (7 1/2 COILS - PAINTED ORANGE)	57H.	3
0202-6	1542714		SPRING, PRESSURE PLATE (9 COILS - PAINTED WHITE)	57L.	6
0202-6	197467		SPRING, PRESSURE PLATE (7 1/2 COILS - PAINTED ORANGE)	57L.	3
0202-10	182697		LEVER, TOGGLE 185", 224"	16G, 56G, 57G.	3
0202-10	683794		LEVER, TOGGLE 259", 289"	16G8, 6H, 56B, 56H, 57B.	3
0202-10	683794		LEVER, TOGGLE - EXCEPT K7.	57H.	3
0202-10	1542396		LEVER, TOGGLE - K7	57H.	3
0202-10	1542396		LEVER, TOGGLE	57L.	3
0202-15	182700		PIN, DOWEL, TO EYE BOLT 5/16"-X59/64"	ALL EXCEPT 56J	3
0202-16	517180		EYE BOLT AND NUT, TOGGLE LEVER ADJ. 185", 224"	16G, 56G, 57G.	3
0202-16	517179		EYE BOLT AND NUT, TOGGLE LEVER ADJ. (STD.) 259"	16G8, 6H, 56B, 57B.	3
0202-16	683919		EYE BOLT AND NUT, TOGGLE LEVER ADJ. (HD.) 259"	56B, 57B.	3
0202-16	683919		EYE BOLT AND NUT, TOGGLE LEVER ADJ. 289"	56B, 56H.	3
0202-16	683919		EYE BOLT AND NUT, TOGGLE LEVER ADJ. - EXCEPT K7.	57H.	3
0202-16	1542722		EYE BOLT AND NUT, TOGGLE LEVER ADJ. - K7	57H.	3
0202-16	1542722		EYE BOLT AND NUT, TOGGLE LEVER ADJ.	57L.	3
0202-18	182701		STRUT, TOGGLE LEVER	ALL EXCEPT 56J 57H, 57L	3
0202-18	182701		STRUT, TOGGLE LEVER - EXCEPT K7.	57H.	3
0202-18	1542720		STRUT, TOGGLE LEVER - K7	57H.	3
0202-18	1542720		STRUT, TOGGLE LEVER	57L.	3
0202-20	182698		SPRING, TOGGLE LEVER ANTI-RATTLE	ALL EXCEPT 56J	3

CLUTCH, PEDAL AND TORQUE CONVERTER

0203

ILLUST. NUMBER	PART NUMBER	CHANGE	DESCRIPTION	MODELS	PER CAR
0203- CLUTCH RELEASE BEARING, SHAFT AND LEVERS					
(Plates 02-1,2)					
0203-1	198118		BEARING AND COLLAR, RELEASE	16G6.56G.57G.	1
0203-1	513143		BEARING AND COLLAR, RELEASE	16G8.6H.56B.56H.57B.57H.57L	1
0203-1	465306		BEARING AND COLLAR, RELEASE } INCLUDES WEAR PLATE AND SPRING	56J	1
0203-5	196087		SPRING, RELEASE BEARING COLLAR	16G6.56G.57G.	1
0203-5	510171		SPRING, RELEASE BEARING COLLAR	16G8.6H.56B.56H.57B.57H.57L	1
0203-5	6302404		SPRING, RELEASE BEARING COLLAR	56J	1
0203-8	199279		PLATE, RELEASE BEARING COLLAR WEAR.	16G6.56G.57G.	1
0203-8	199150		PLATE, RELEASE BEARING COLLAR WEAR.	16G6.6H.56B.56H.57B.57H.57L	1
0203-10	6403546		LEVER AND BALL STUD, RELEASE.	56J	1
	----		NUT, BALL STUD HEX. 7/16"-20	56J	1
	----		WASHER, SH'PRF. 7/16"	56J	1
0203-11	535692		SHAFT AND LEVERS, RELEASE - LHC	16G6.56G.57G.	1
	535965		SHAFT AND LEVERS, RELEASE - RHC	16G6.56G.57G.	1
0203-11	536298		SHAFT AND LEVERS, RELEASE - LHC	16G8.6H.56B.56H.57B.57H.57L	1
	536310		SHAFT AND LEVERS, RELEASE - RHC	16G8.6H.56B.56H.57B.57H.57L	1
0203-13	524848		PLUG, CUPPED 45/64" O.D. - LHC } PRESSED IN	16G6.56G.57G.	1
0203-13	524849		PLUG, CUPPED 53/64" O.D. - LHC } CLUTCH HOUSING.	16G8.6H.56B.56H.57B.57H.57L	1
0203-15	535951		RETAINER, RELEASE SHAFT } INCL. GREASE	16G6.56G.57G.	1
0203-15	529333		RETAINER, RELEASE SHAFT } FITTING AND SEAL	16G8.6H.56B.56H.57B.57H.57L	1
	G271326		GREASE FITTING (ALEMITE STRAIGHT)	ALL EXCEPT 56J.	1
	G180078		SCREW, TO CLUTCH HOUSING 5/16"-18X7/8"	ALL EXCEPT 56J.	1
	G120214		WASHER, LOCK 5/16"	ALL EXCEPT 56J.	1
0203-19	679718		GREASE SEAL, RELEASE SHAFT RETAINER	16G6.56G.57G.	1
0203-19	527280		GREASE SEAL, RELEASE SHAFT RETAINER	16G8.6H.56B.56H.57B.57H.57L	1
0203-21	316419		BOOT, RELEASE LEVER	56J	1
	----		RIVET, OVAL HD. 9/64"X9/16" SPLIT.	56J	1
0203-28	532051		LEVER, OUTER, RELEASE SHAFT - LHC	16G6.56G.57G.	1
	533205		LEVER, OUTER, RELEASE SHAFT - RHC	16G6.56G.57G.	1
0203-28	536306		LEVER, OUTER, RELEASE SHAFT - LHC	16G8.6H	1
0203-28	536306		LEVER, OUTER, RELEASE SHAFT - LHC - EXCEPT Y.	56B.56H.57B.57H	1
0203-28	536306		LEVER, OUTER, RELEASE SHAFT - LESS OD. } LHC - Y	56H.57H	1
	1539398		LEVER, OUTER, RELEASE SHAFT - WITH OD. }	56H.57H	1
0203-28	1539398		LEVER, OUTER, RELEASE SHAFT - LHC	57L	1
	536312		LEVER, OUTER, RELEASE SHAFT - RHC	16G8.6H.56B.56H.57B.57H.57L	1
	522272		PIN, TO RELEASE SHAFT 1/4" -X15/16" - RHC.	16G6.56G.57G.	1
	42X102		PIN, TO RELEASE SHAFT 5/16" X1 1/8" - LHC.	16G6.56G.57G.	1
	42X102		PIN, TO RELEASE SHAFT 5/16" X1 1/8"	16G8.6H.56B.56H.57B.57H.57L	1
	----		COTTER 3/32" X3/4"	ALL EXCEPT 56J.	1
0204- CLUTCH PEDAL AND SPRING (Plates 02-1,2)					
0204-1	536147		PEDAL, CLUTCH - LHC	ALL MODELS	1
	536148		PEDAL, CLUTCH - RHC	ALL EXCEPT 56J.	1
	----		BOLT, TO SHAFT CLAMPING 3/8"-24X1"-LHC	ALL MODELS	1
	G120369		NUT, HEX. 3/8"-24.	ALL MODELS	1
	G120394		WASHER, PLAIN 3/8"	ALL MODELS	1
	G120382		WASHER, LOCK 3/8"	ALL MODELS	1
0204-3	536743		SPRING, PEDAL, PULL BACK.	ALL MODELS	1
	533181		EXTENSION, PEDAL PULLBACK SPRING TO PEDAL - RHC	ALL EXCEPT 56J.	1
1108-7	530366		GROMMET, PEDAL (ILLUST. PLATE 11-3.4)	ALL MODELS	1
0204-8	537288		PAD, PEDAL.	ALL MODELS	1
	G120369		NUT, HEX. 3/8"-24	ALL MODELS	1
	G138489		WASHER, SH'PRF. 3/8"	ALL MODELS	1
	----		SHIELD, PEDAL SPLASH-SEE GROUPS 1507.2138		

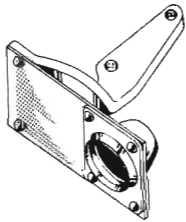
CLUTCH, PEDAL AND TORQUE CONVERTER

ILLUST. NUMBER	PART NUMBER	CHANGE ✓	DESCRIPTION	MODELS	PER CAR
0205- CLUTCH PEDAL SHAFT (Plates 02-1,2)					
0205-1	533188		SHAFT, PEDAL - LHC	ALL EXCEPT 56J	1
	533180		SHAFT, PEDAL - RHC	ALL EXCEPT 56J	1
0205-1	1540227		SHAFT, PEDAL	56J	1
	G114498		NUT, SHAFT 5/8" -18 - RHC	ALL EXCEPT 56J	1
0205-3	532035		WASHER, SHAFT SPACER - LHC.	ALL EXCEPT 56J	1
0205-3	1540231		SPACER, SHAFT	56J	1
	G131016		WASHER, PLAIN 5/8" -RHC.	ALL EXCEPT 56J	1
	----		GREASE FITTING, PEDAL SHAFT - RHC.	ALL EXCEPT 56J	1
	194557		BUSHING, PEDAL SHAFT (LOCATED IN TUBE WELDED IN FRAME).	ALL MODELS	2
	536385		SLEEVE, PEDAL SHAFT LUBRICATION (INCL. BUSHINGS AND GREASE FITTINGS) (WITH POWER BRAKES)	ALL MODELS	1
	679093		GREASE FITTING, SLEEVE.	ALL MODELS	1
0206- CLUTCH OPERATING SHAFT AND RODS (Plates 02-1,2)					
0206-1	537107		SHAFT AND LEVERS, OPERATING - LHC (LESS OD.)	16G6	1
0206-1	537108		SHAFT AND LEVERS, OPERATING - W-F-D - LHC } WITH	16G6	1
0206-1	537107		SHAFT AND LEVERS, OPERATING - C-K - LHC } OD	16G6	1
0206-1	537107		SHAFT AND LEVERS, OPERATING - LHC.	16G8,6H.	1
0206-1	537107		SHAFT AND LEVERS, OPERATING - EXCEPT Y - LHC	56G, 56B, 56H, 57G, 57B.	1
0206-1	537107		SHAFT AND LEVERS, OPERATING - EXCEPT Y - K - LHC	57H	1
0206-1	537107		SHAFT AND LEVERS, OPERATING - LESS OD. - Y	56H, 57H.	1
0206-1	1539400		SHAFT AND LEVERS, OPERATING - WITH OD. - Y	56H, 57H.	1
0206-1	1539401		SHAFT AND LEVERS, OPERATING - K - LHC	57H	1
0206-1	1539400		SHAFT AND LEVERS, OPERATING - LHC	57L.	1
	537115		SHAFT AND LEVERS, OPERATING - RHC	ALL EXCEPT 56J	1
0206-1	1539422		SHAFT AND LEVERS, OPERATING	56J.	1
0206-4	534872		BOOT, OPERATING SHAFT - LHC.	ALL MODELS	1
0206-6	1539432		RETAINER, OPERATING SHAFT BOOT	56J.	1
0206-8	532200		BEARING AND RETAINER KIT, OPERATING SHAFT - RHC.	ALL EXCEPT 56J	1
	G181595		BOLT, TO SUPPORT BRACKET 5/16"-24X3/4"	ALL EXCEPT 56J	2
	G120368		NUT, HEX. 5/16"-24	ALL EXCEPT 56J	2
	G120214		WASHER, LOCK 5/16"	ALL EXCEPT 56J	2
0206-10	534833		BALL STUD, OPERATING SHAFT BEARING - LHC	ALL EXCEPT 56J	1
	G124934		NUT, STUD TO BRACKET 1/2" -20	ALL EXCEPT 56J	1
	----		WASHER, SH'PRF. 1/2"	ALL EXCEPT 56J	1
0206-10	534833		BALL STUD, OPERATING SHAFT BEARING	56J.	2
	G124934		NUT, BALL STUD 1/2"-20	56J.	2
	----		WASHER, SH'PRF. 1/2"	56J.	2
0206-12	1539428		SPRING, OPERATING SHAFT THRUST	56J.	1
0206-14	1539426		WASHER, OPERATING SHAFT (FELT)	56J.	2
0206-16	G120393		WASHER, OPERATING SHAFT THRUST	56J.	3
0206-18	529527		GREASE SEAL, OPERATING SHAFT (RUBBER).	56J.	1

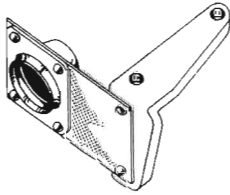
CLUTCH, PEDAL AND TORQUE CONVERTER

0206

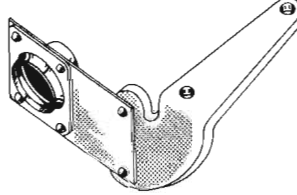
ILLUST. NUMBER	PART NUMBER	CHANGE	DESCRIPTION	MODELS	PER CAR
0206- CLUTCH OPERATING SHAFT AND RODS-Cont'd. (Plates 02-1,2)					



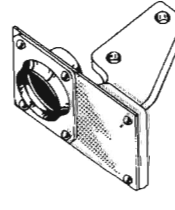
0206-19A



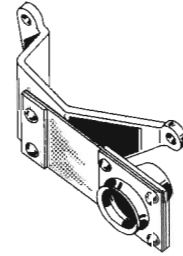
0206-19B



0206-19C



0206-19D



0206-19E

C-3342

0206-19A	535329	BRACKET w/BALL STUD, OPERATING SHAFT SUPPORT - EXCEPT C-K - LHC	16G6, 56G, 57G	1
0206-19B	535330	BRACKET w/BALL STUD, OPERATING SHAFT SUPPORT - C-K - LHC	56G, 57G	1
0206-19C	533170P	BRACKET, OPERATING SHAFT AND BEARING SUPPORT -RHC	16G6, 56G, 57G	1
0206-19C	535331	BRACKET w/BALL STUD, OPERATING SHAFT SUPPORT - EXCEPT C-K - LHC	16G8, 6H	1
0206-19D	535332	BRACKET w/BALL STUD, OPERATING SHAFT SUPPORT - C-K - LHC	16G8, 6H	1
0206-19C	535331	BRACKET w/BALL STUD, OPERATING SHAFT SUPPORT W-F-D-P - LHC	56B, 56H, 57B, 57H	1
0206-19D	535332	BRACKET w/BALL STUD, OPERATING SHAFT SUPPORT - C-K - LHC	56B, 56H, 57B	1
0206-19D	535332	BRACKET w/BALL STUD, OPERATING SHAFT SUPPORT - C - LHC	57H	1
0206-19E	1539391	BRACKET w/BALL STUD, OPERATING SHAFT SUPPORT - K	57H	1
0206-19E	1539393	BRACKET w/BALL STUD, OPERATING SHAFT SUPPORT -LHC	57L	1
0206-19C	535331	BRACKET w/BALL STUD, OPERATING SHAFT SUPPORT - (LESS) OD) Y - LHC	56H, 57H	1
0206-19E	1539393	BRACKET w/BALL STUD, OPERATING SHAFT SUPPORT - (WITH OD) Y - LHC	56H, 57H	1
0206-19	533167P	BRACKET, OPERATING SHAFT AND BEARING SUPPORT -RHC	16G8, 6H, 56B, 56H, 57B, 57H, 57L	1
0206-19	1539433	BRACKET LESS BALL STUD, OPERATING SHAFT SUPPORT TO TRANS	56J	1
0206-19	1540226	BRACKET LESS BALL STUD, OPERATING SHAFT SUPPORT TO MASTER CYL.	56J	1
0206-21	680445	SPACER, TO M/C (FOR 1540226)	56J	2
	G180121	SCREW, TO TRANS. 3/8"-16X7/8" - LHC	16G, 6H	2
	G180121	SCREW, TO TRANS. 3/8"-16X7/8" - EXCEPT Y	56G, 56B, 56H, 57G, 57B	2
	G180121	SCREW, TO TRANS. 3/8"-16X7/8" - EXCEPT Y-K	57H	2
	G180121	SCREW, TO TRANS. 3/8"-16X7/8" (LESS OD) - EXCEPT - Y	56H, 57H	2
	G180079	SCREW, TO TRANS. 5/16"-18X1" (WITH OD) - Y	56H, 57H	2
	G180079	SCREW, TO TRANS. 5/16"-18X1" - K	57H	2
	G180079	SCREW, TO TRANS. 5/16"-18X1"	57L	2
	-----	SCREW, TO TRANS. - RHC - SEE GROUP 0761.	ALL EXCEPT 56J	2
	G180079	SCREW, TO TRANS. 5/16"-18X1"	56J	2
	-----	NUT, TO M/C HEX. 3/8"-24	56J	2
	G120294	WASHER, SPACER PLAIN 3/8" } FOR 1540226	56J	2
	G120294	WASHER, PLAIN 3/8" }	ALL EXCEPT 56J	2
	G120382	WASHER, LOCK 3/8" } LHC	ALL EXCEPT 56J	2
0206-26	199220	SLEEVE, OPERATING SHAFT - LHC	ALL EXCEPT 56J	1
	533179	SLEEVE, OPERATING SHAFT - RHC	ALL EXCEPT 56J	1
0206-27	534175	PIN, CLEVIS, TO OPERATING SHAFTS 5/16" X 1 1/8" - LHC	ALL EXCEPT 56J	2
	42X85	PIN, CLEVIS, TO PEDAL SHAFT 5/16" X 17/32"	ALL EXCEPT 56J	1
	42X102	PIN, CLEVIS, TO OPERATING SHAFT 5/16" X 1 1/8"	ALL EXCEPT 56J	1
	-----	COTTER, 3/32" X 1"	ALL EXCEPT 56J	2
0206-28	533933	WASHER, SLEEVE TO OPERATING SHAFT - RUBBER	ALL EXCEPT 56J	1

CLUTCH, PEDAL AND TORQUE CONVERTER

ILLUST. NUMBER	PART NUMBER	CHANGE	DESCRIPTION	MODELS	PER CAR
0206- CLUTCH OPERATING SHAFT AND RODS-Cont'd. (Plates 02-1, 2)					
0206-29	532034		ROD, OPERATING SHAFT TO RELEASE SHAFT LEVER - EXCEPT C-K	ALL EXCEPT 56J	1
0206-29	531992		ROD, OPERATING SHAFT TO RELEASE SHAFT LEVER - C-K	ALL EXCEPT 56J	1
0206-29	1539448		ROD, OPERATING SHAFT TO RELEASE SHAFT LEVER	56J	1
0206-31	6302481		NUT, ADJUSTING (SPECIAL)	56J	1
	G120368		NUT, LOCKING HEX. 5/16"-24	56J	1
0206-33	42X115		PIN, TO OPERATING SHAFT	56J	1
0206-34	184291		WASHER, SPRING	56J	1
	-----		COTTER, 3/32"X3/4"	56J	1
0206-39	531993		CLEVIS, OPERATING SHAFT TO RELEASE SHAFT LEVER	ALL EXCEPT 56J, 57H	1
0206-39	531993		CLEVIS, OPERATING SHAFT TO RELEASE SHAFT LEVER - EXCEPT - K	57H	1
0206-39	1539397		CLEVIS, OPERATING SHAFT TO RELEASE SHAFT LEVER - K	57H	1
0206-40	G120369		NUT, LOCK 3/8"-24	ALL EXCEPT 56J	1
0206-43	42X10		PIN, TO PEDAL AND OPERATING SHAFT LEVER - 3/8"X27/32"	ALL EXCEPT 56J	2
0206-45	192057		WASHER, SPRING	ALL EXCEPT 56J	2
	-----		COTTER, 3/32"X3/4"	ALL EXCEPT 56J	2
0206-49	1540225		LINK, OPERATING SHAFT	56J	2
0206-52	1539446		SPACER, LINK	56J	2
0206-54	1540509		WASHER, LINK SPRING	56J	4
	G181004		BOLT, THRU LINK 5/16"-24X1 1/8"	56J	2
	G120368		NUT, HEX. 5/16"-24	56J	2
	G120214		WASHER, LOCK 5/16"	56J	2
0207- CLUTCH PILOT BEARING (Plates 01-6, 8, 10)					
0207-1	194348		BEARING, PILOT-COMPOSITION (LOCATED IN FLYWHEEL)	16G, 56G, 57G	1
0207-1	510168		BEARING, PILOT-COMPOSITION (LOCATED IN CRANKSHAFT)	16G8, 6H, 56B, 56H, 57B, 57H, 57L	1
0207-1	421731		BEARING, PILOT-(BALL TYPE) (LOCATED IN CRANKSHAFT)	56J	1
0209- CLUTCH AND FLYWHEEL HOUSING (Plates 01-6, 8, 10)					
0209-1	529322	◆	HOUSING w/BUSHING, CLUTCH	16G6, 56G, 57G	1
0203-13	524848		PLUG, SHAFT HOLE (CUPPED) 45/64" OD. - LHC	16G6, 56G, 57G	1
0209-2	196420		DOWEL BOLT, TO ENGINE REAR PLATE (25/64" BODY) 3/8"-24X1"	16G6, 56G, 57G	2
	G180124		SCREW, TO CYLINDER BLOCK 3/8"-16X1 1/4"	16G6, 56G, 57G	3
	G181608		BOLT, TO ENGINE REAR PLATE 5/16"-24X1"	16G6, 56G, 57G	5
	G120368		NUT, HEX. 5/16"-24	16G6, 56G, 57G	5
	G120369		NUT, HEX. 3/8"-24	16G6, 56G, 57G	2
	G138485		WASHER, SH'PRF. 5/16"	16G6, 56G, 57G	5
	G138489		WASHER, SH'PRF. 3/8"	16G6, 56G, 57G	5
0209-1	536301	◆	HOUSING w/BUSHING, CLUTCH	16G8, 6H	1
0209-1	1539371	◆	HOUSING w/BUSHING, CLUTCH - EXCEPT Y AND POLICE CARS	56B, 57H, 57B	1
0209-1	1539371	◆	HOUSING w/BUSHING, CLUTCH - EXCEPT Y-K	57H	1
0209-1	1539371	◆	HOUSING w/BUSHING, CLUTCH (LESS OD.) } Y AND	56B, 56H, 57B, 57H	1
0209-1	1539373	◆	HOUSING w/BUSHING, CLUTCH (WITH OD.) } POLICE CARS.	56B, 56H, 57B, 57H	1
0209-1	1539373	◆	HOUSING w/BUSHING, CLUTCH - K	57H	1
0209-1	1539373	◆	HOUSING w/BUSHING, CLUTCH	57L	1
0209-1	465143		HOUSING, CLUTCH (WITH OD.)	56J	1
0203-13	524849		PLUG, SHAFT HOLE (CUPPED) 53/64" O.D. - LHC	16G8, 6H, 56B, 56H, 57B, 57H, 57L	1
0209-3	531085		DOWEL, PIN, TO CYL. BLOCK 11/32"X1 1/8" -NOTE 1	16G8, 6H, 56B, 56H, 57B, 57H, 57L	2
0209-3	531086		DOWEL, PIN, TO CYL. BLOCK 3/8"X1 1/8" - NOTE 2	16G8, 6H, 56B, 56H, 57B, 57H, 57L	2
	G179839		SCREW, TO CYL. BLOCK 3/8"-16X1"	16G8, 6H, 56B, 56H, 57B, 57H, 57L	7
	G120382		WASHER, LOCK 3/8"	16G8, 6H, 56B, 56H, 57B, 57H, 57L	7
	G179861		SCREW, TO CYL. BLOCK 7/16"-14X 3/8"	56J	8
	-----		WASHER, LOCK 7/16"	56J	8
◆ WHEN USED ON RHC CARS, REMOVE SHAFT HOLE PLUG.					

NOTES { 1 - FOR REGULAR PRODUCTION, USED WHEN RE-ALIGNMENT, OF HOUSING IS NOT REQUIRED.
2 - MUST BE USED WHEN REPLACING HOUSING OR INSTALLING A STRIPPED ENGINE.

CLUTCH, PEDAL AND TORQUE CONVERTER

0209

ILLUST. NUMBER	PART NUMBER	CHANGE	DESCRIPTION	MODELS	PER CAR
0209- CLUTCH AND FLYWHEEL HOUSING-Cont'd.					
(Plates 01-6, 8, 10)					
0209-5	531319		PLATE, HOUSING COVER FRONT	16G8, 6H, 56B, 56H, 57B, 57H, 57L.	1
	G181608		BOLT, TO HOUSING 5/16"-24X1"	16G8, 6H, 56B, 56H, 57B, 57H, 57L.	4
	G120368		NUT, HEX. 5/16"-24	16G8, 6H, 56B, 56H, 57B, 57H, 57L.	4
	G446363		WASHER, PLAIN 5/16"	16G8, 6H, 56B, 56H, 57B, 57H, 57L.	*
	G120214		WASHER, LOCK 5/16"	16G8, 6H, 56B, 56H, 57B, 57H, 57L.	4
0209-6	527420		BUSHING, HOUSING	16G6, 56G, 57G	1
0209-6	527421		BUSHING, HOUSING	16G8, 6H, 56B, 56H, 57B, 57H, 57L.	1
0220- TORQUE CONVERTER (Plate 02-3)					
0220-1	537316		CONVERTER COMPLETE, TORQUE (INCL. STARTER GEAR)	16G6	1
0220-1	1540243		CONVERTER COMPLETE, TORQUE (INCL. STARTER GEAR) - (USED WITH STUDEBAKER AUTOMATIC TRANS.)	56G.	1
0220-1	1539090		CONVERTER COMPLETE, TORQUE (INCL. STARTER GEAR) - (USED WITH FLIGHT-O-MATIC TRANS.)	56G.	1
0220-1	1541550		CONVERTER COMPLETE, TORQUE (INCL. STARTER GEAR)	57G.	1
0220-1	536501		CONVERTER COMPLETE, TORQUE (INCL. STARTER GEAR)	16G8, 6H.	1
0220-1	1539091		CONVERTER COMPLETE, TORQUE (INCL. STARTER GEAR)	56B, 56H, 57B, 57H, 57L.	1
	6479085		CONVERTER COMPLETE, TORQUE NOTE 3 } PARTS ILLUSTR.	56J.	1
	6489485		CONVERTER COMPLETE, TORQUE NOTE 4 } PLATE 02-4	56J.	1
	G9409125		SCREW, TO DRIVE PLATE 3/8"-24X1/2" (FOR 1539090, 1)	56G, 56B, 56H, 57G, 57B, 57H, 57L.	6
	G451010		NUT, SELF LOCKING HEX. 3/8"-24	56J.	4
	G451010		NUT, TO PLATE 3/8"-24 (FOR 537316, 536501, 1540243)	16G, 6H, 56G	6
	G120394		WASHER, PLAIN 3/8"	16G, 6H, 56G	6
	41X243		WASHER, PLAIN 3/8"	56G, 56B, 56H, 57G, 57B, 57H, 57L.	6
	529075		PLUG, DRAIN 3/8"-24"	16G, 6H, 56G	1
	529076		GASKET, PLUG 15/64" - COPPER } FOR 537316,	16G, 6H, 56G	1
	G444614		PLUG, DRAIN 1/8" PIPE (FOR 1539090, 1)	56G, 56B, 56H, 57G, 57B, 57H, 57L.	2
	510168		BEARING, TORQUE CONVERTER PILOT - COMPOSITION (LOCATED IN CRANKSHAFT)	ALL EXCEPT 56J	1
0225- TORQUE CONVERTER PARTS (Plate 02-4)					
0225-1	6470308		HOUSING W/BUSHING, CONVERTER CLUTCH	56J.	1
0225-4	G127950		PLUG, DRAIN 1/8"-27 PIPE	56J.	2
0225-6	450670		BOLT, TO PUMP 5/16"-24X1"	56J.	24
0225-7	G451006		NUT, HEX 5/16"-24	56J.	24
0225-8	433134		WASHER, PLAIN 5/16"	56J.	24
0225-12	6470309		BUSHING, CONVERTER CLUTCH HOUSING,	56J.	1
0225-14	450660		SEAL, CONVERTER CLUTCH HOUSING TO PUMP	56J.	1
0225-18	6470331		PISTON, CONVERTER CLUTCH	56J.	1
0225-20	423417		RING, INNER, CONVERTER CLUTCH PISTON	56J.	1
0225-21	450217		RING, OUTER, CONVERTER CLUTCH PISTON	56J.	4
0225-24	450678		PLATE AND FACINGS, CONVERTER CLUTCH DRIVEN	56J.	1
0225-28	450216		PLATE, CONVERTER CLUTCH PRESSURE	56J.	1
0225-30	423425		SPACER, TO HOUSING.	56J.	4
0225-32	450338		SCREW, TO HOUSING 5/16"-18X11/16" (SPECIAL)	56J.	8
0225-35	6479113		HUB, CONVERTER CLUTCH	56J.	1
0225-38	6470312		BEARING, CONVERTER CLUTCH HUB,	56J.	1
0225-41	6470310		PLATE, CONVERTER CLUTCH HUB BEARING,	56J.	1
0225-44	465327		PUMP, CONVERTER.	56J.	1
0225-47	443159		SCREW, TO SHAFT 5/16"-24X11/16" (SPECIAL)	56J.	6
0225-49	470013		WASHER, LOCK 5/16" (SPECIAL)	56J.	6

NOTES { * - USE AS REQUIRED.
3 - USED BEFORE TRANSMISSION SERIAL No. S-2463.

CLUTCH, PEDAL AND TORQUE CONVERTER

ILLUST. NUMBER	PART NUMBER	CHANGE ✓	DESCRIPTION	MODELS	PER CAR
0225- TORQUE CONVERTER PARTS-Cont'd.					
(Plate 02-4)					
0225-53	450257		SHAFT AND BUSHING, CONVERTER PUMP - NOTE 5	56J	1
0225-53	6489467		SHAFT AND BUSHING, CONVERTER PUMP - NOTE 4	56J	1
0225-56	421599		GASKET, CONVERTER PUMP SHAFT	56J	1
0225-60	450208		REACTOR, CONVERTER	56J	1
0225-63	6470318		SHAFT w/BUSHING, CONVERTER REACTOR	56J	1
0225-65	6484045		BUSHING, CONVERTER REACTOR SHAFT	56J	1
0225-68	6480797		THRUST WASHER, CONVERTER REACTOR SHAFT	56J	1
0225-71	6480810		SPACER, CONVERTER REACTOR SHAFT THRUST	56J	1
0225-78	450218		CLUTCH, CONVERTER REACTION (CONSISTS OF: 28- 410901 SPRAGS AND 2-458294 SPRINGS).	56J	1
0225-80	410901		SPRAG, CONVERTER REACTION CLUTCH	56J	28
0225-82	458294		SPRING, CONVERTER REACTION CLUTCH SPRAG.	56J	2
0225-85	6480070		PLATE, FRONT CONVERTER REACTION BEARING	56J	1
0225-87	6489322		PLATE, REAR, CONVERTER REACTION BEARING	56J	1
0225-90	470238		RACE, CONVERTER REACTION CLUTCH OUTER	56J	1
0225-94	450378		RING, CONVERTER REACTION CLUTCH RETAINING.	56J	2
0225-97	450219		THRUST WASHER, CONVERTER REACTION CLUTCH	56J	2
0225-104	470219		WASHER, CONVERTER REACTION CLUTCH.	56J	1
0225-107	6479191		WASHER, SPRING, CONVERTER REACTION CLUTCH	56J	1
0225-110	423675		TURBINE, FIRST, CONVERTER	56J	1
0225-112	443159		SCREW, TO HUB 5/16"-24X11/16" (SPECIAL)	56J	6
0225-114	433134		WASHER, LOCK 5/16" (SPECIAL)	56J	6
0225-118	6470338		HUB, CONVERTER FIRST TURBINE	56J	1
			THICK		
0225-123	6470320		THRUST WASHER, CONVERTER FIRST TURBINE HUB . .062	56J	*
0225-123	6470321		THRUST WASHER, CONVERTER FIRST TURBINE HUB . .070	56J	*
0225-123	6470322		THRUST WASHER, CONVERTER FIRST TURBINE HUB . .078	56J	*
0225-123	6470323		THRUST WASHER, CONVERTER FIRST TURBINE HUB . .086	56J	*
0225-123	6470324		THRUST WASHER, CONVERTER FIRST TURBINE HUB . .094	56J	*
0225-123	6470325		THRUST WASHER, CONVERTER FIRST TURBINE HUB . .102	56J	*
0225-123	6470326		THRUST WASHER, CONVERTER FIRST TURBINE HUB . .110	56J	*
0225-128	434425		TURBINE, SECOND, CONVERTER	56J	1
0225-130	443166		SCREW, TO FIRST TURBINE 1/4"-20X7/8" (SPECIAL).	56J	6
	G120392		WASHER, LOCK 1/4"	56J	6

- NOTES {
- * - USE AS REQUIRED.
 - 4 - USED ON AND AFTER TRANSMISSION SERIAL NO. S-2463.
 - 5 - USED BEFORE TRANSMISSION SERIAL NO. S-2463. IF SHAFT IS REQUIRED BECAUSE OF SPLINE DAMAGE ORDER 6484523 ROTOR AND SHAFT KIT GROUP 0823.

CLUTCH, PEDAL AND TORQUE CONVERTER

0230

ILLUST. NUMBER	PART NUMBER	CHANGE	DESCRIPTION	MODELS	PER CAR
0230- TORQUE CONVERTER HOUSING (Plates 02-3)					
0230-1A	527552		HOUSING, TORQUE CONVERTER (USED WITH STUDEBAKER AUTOMATIC TRANS.)	16G6, 56G	1
0230-1B	537581		HOUSING, TORQUE CONVERTER (USED WITH FLIGHT-O-MATIC TRANS.)	56G, 57G	1
0230-1C	530270		HOUSING, TORQUE CONVERTER	16G8, 6H	1
0230-1D	537559		HOUSING, TORQUE CONVERTER	56B, 56H, 57B, 57H, 57L	1
0230-2	531085		DOWEL, PIN, TO ENGINE PLATE 11/32"X1 1/8" - NOTE 1	ALL EXCEPT 56J	2
0230-2	531086		DOWEL, PIN, TO ENGINE PLATE 3/8"X1 1/8" - NOTE 2	ALL EXCEPT 56J	2
	G179842		SCREW, TO CYL. BLOCK 3/8"-16X1 3/8"	16G6, 56G, 57G	3
	G180121		SCREW, TO ENGINE PLATE 3/8"-16X1 1/8"	16G6, 56G, 57G	5
	G179796		SCREW, TO ENGINE PLATE 1/4"-20X 7/8"	16G6, 56G, 57G	2
	G180123		SCREW, TO CYL. BLOCK 3/8"-16X1 1/8"	16G8, 6H, 56B, 56H, 57B, 57H, 57L	7
	G120380		WASHER, LOCK 1/4"	16G6, 56G, 57G	2
	G120382		WASHER, LOCK 3/8"	ALL EXCEPT 56J	*
0230-1	470101		HOUSING, TORQUE CONVERTER (ILLUST. PLATE 08-9)	56J	1
	G141240		PIN, DOWEL TO ENGINE 3/8"X3/4"	56J	1
	G127950		PLUG, HEX. HD. 1/8"-27 PIPE (BRASS)	56J	3
	470226		PLUG, DISCHARGE	56J	1
	450346		PLUG, INTAKE (SMALL)	56J	1
	450504		PLUG, INTAKE (LARGE)	56J	1
	----		GASKET, DISCHARGE PLUG (COPPER & ASBESTOS)	56J	1
	G179861		SCREW, TO ENGINE 7/16"-14X1 3/8"	56J	8
	470059		WASHER, PLAIN 7/16"	56J	8
	G120383		WASHER, LOCK 7/16"	56J	8
	G179862		SCREW, TO TRANS. 7/16"-14X1 1/2"	56J	9
	470058		SCREW, TO TRANS. (SPECIAL)	56J	1
	470059		WASHER, PLAIN (SPECIAL)	56J	10
	----		WASHER, SH'PRF. 7/16"	56J	9
0230-5	532882		COVER, CONVERTER HOUSING (USED WITH STUDEBAKER AUTOMATIC TRANS.)	16G6, 56G	1
0230-5	532522		COVER, CONVERTER HOUSING	16G6, 6H	1
	G180016		SCREW, TO HOUSING 1/4"-20X1/2"	16G, 6H, 56G	4
	G120380		WASHER, LOCK 1/4"	16G, 6H, 56G	4
	G181595		BOLT, TO FRONT PLATE 5/16"-24X3/4"	16G8, 6H	2
	G120368		NUT, HEX. 5/16"-24	16G8, 6H	2
	G446363		WASHER, PLAIN 5/16"	16G8, 6H	2
	G120214		WASHER, LOCK 5/16"	16G8, 6H	2
0230-10	530170		AIR INTAKE, CONVERTER HOUSING	16G6, 56G	1
	G180016		SCREW, TO HOUSING 1/4"-20X1/2"	16G6, 56G	2
	----		WASHER, PLAIN 1/4"	16G6, 56G	1
	G120380		WASHER, LOCK 1/4"	16G6, 56G	2
0230-16	1540138		SHIELD, CONVERTER HOUSING SPLASH (FOR 537581, 537559 HOUSING)	56G, 56B, 56H, 57G, 57B, 57H, 57L	1
0209-5	531319		PLATE, HOUSING COVER FRONT	56B, 56H, 57B, 57H, 57L	1
	G180078		SCREW, TO PLATE 5/16"-18X1"	56B, 56H, 57B, 57H, 57L	1
	G181004		BOLT, TO HOUSING 5/16"-24X1 1/8"	56B, 56H, 57B, 57H, 57L	3
	G120368		NUT, HEX. 5/16"-24	56B, 56H, 57B, 57H, 57L	3
	G446363		WASHER, PLAIN 5/16"	56B, 56H, 57B, 57H, 57L	*
	G120214		WASHER, LOCK 5/16"	56B, 56H, 57B, 57H, 57L	4
0230-20	410864		BUSHING, TORQUE CONVERTER HOUSING (ILLUST. PLATE 08-9)	56J	1
0230-25	6470205		SEAL, TORQUE CONVERTER HOUSING (ILLUST. PLATE 08-9)	56J	1
0230-28	450345		GASKET, HOUSING TO TRANS. (ILLUST. PLATE 08-9)	56J	1

NOTES { * - USE AS REQUIRED
 1 - FOR REGULAR PRODUCTION, USED WHEN RE-ALIGNMENT OF HOUSING NOT REQUIRED.
 2 - MUST BE USED WHEN REPLACING HOUSING OR INSTALLING A STRIPPED ENGINE.

MEMORANDA

PackardInfo.com

IMPORTANT

To assure prompt shipment of parts, always give
Car Serial and **Engine Number**

L. H. C. - Left hand drive only

R. H. C. - Right hand drive only
